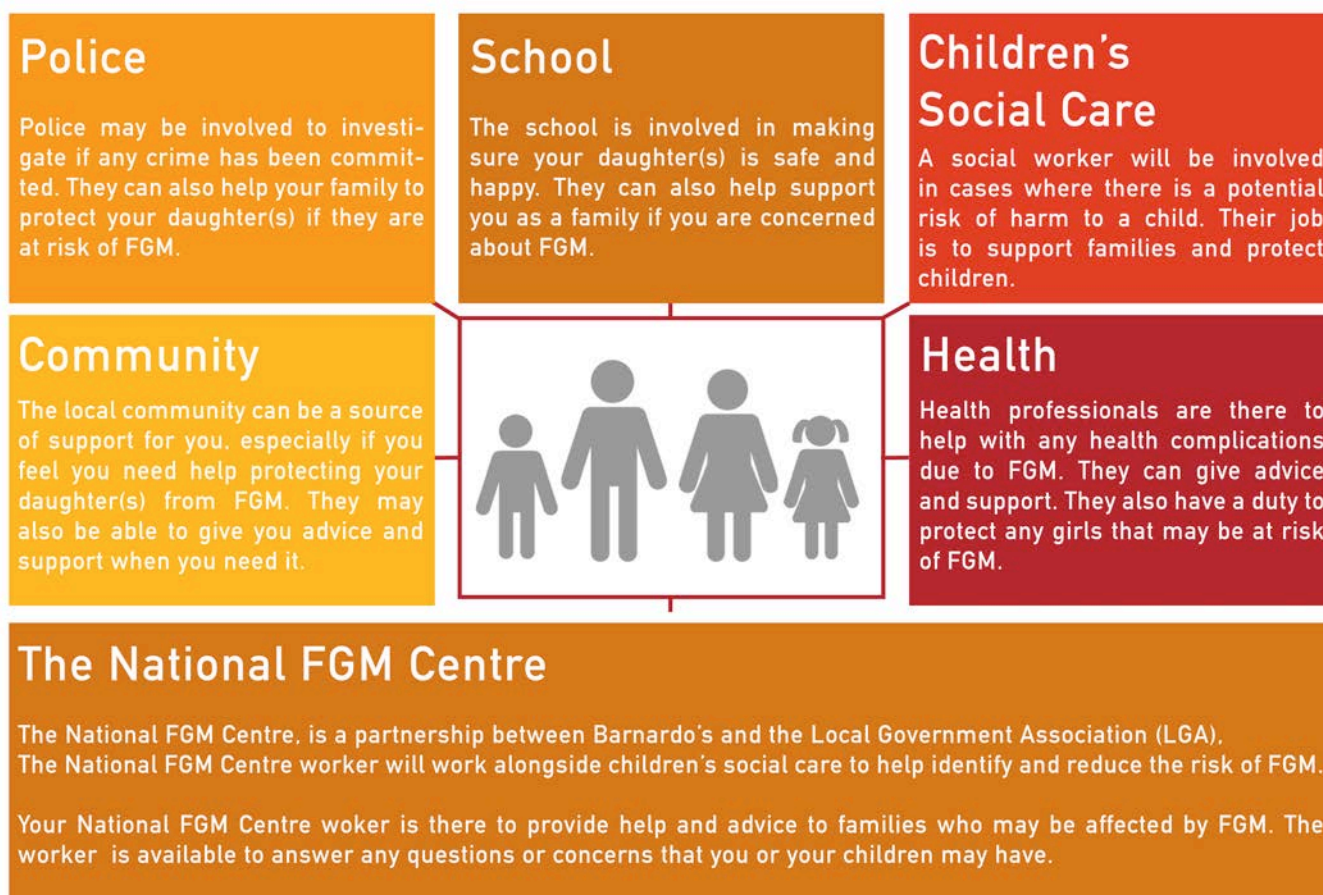


## Mapping Activity

Before you begin to assess risk and gather information, it is important that the family know who is currently involved and what their role is.

A good way to explore the various roles of professionals involved with the family is to undertake a 'mapping exercise' to explain what each agency does and why they are involved with the family. Below is an example, and you can find a blank template in Appendix 6. If English is limited we recommend you write in English and using the interpreter, explain the different agency roles to the family in their preferred language.



After introducing yourself and exploring the roles of other agencies, we recommend you start asking more direct questions around FGM to begin your assessment, bearing in mind the questions in Appendix 5. Please do not read the questions directly from the guide in front of the family.